

1189 Avtronic

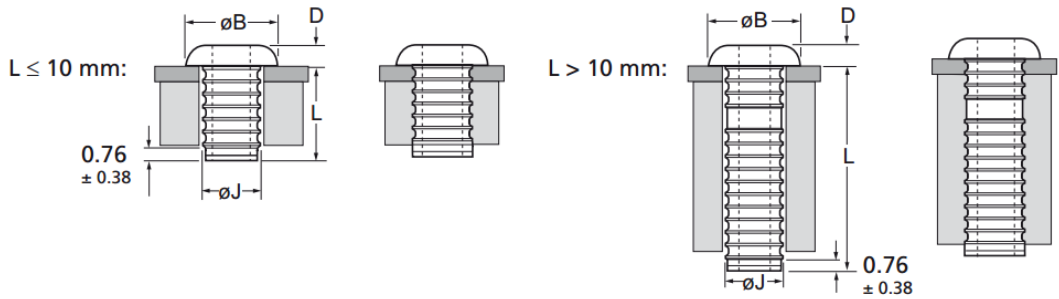
Aluminium - Dome head
2.5 mm (.098") - 2.8 mm (.110")

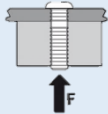
Features

- Initially designed to attach DIN 41612 connectors to PCBs but can also be used to attach a wide range of other connectors and components
- Annular grooves on the body expand radially during installation
- Provide a vibration resistant joint, increased pull-out resistance and good residual clamp
- Various body lengths provide a wide grip range to accommodate most combinations of connector and PC board thickness
- Ideal tack rivet
- Can be used in blind hole applications

Material

- Aluminium alloy (5% Mg), natural

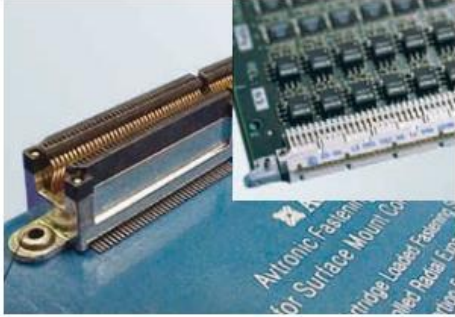


Part No.	Size ø	Hole Size		øB	D	L	øJ	Fasteners per pod	 kN
		nom.	min.						
01189-02506	2.5 (.098")	2.50	2.60	4.14	0.94	5.18	2.48	51	0.03
01189-02508						6.78		41	
01189-02510						8.36		33	
01189-02512						9.96		28	
01189-02514						11.53		24	
01189-02516						13.13		21	
01189-02518						14.71		19	
01189-02520						16.31		17	
01189-02522						17.88		16	
01189-02806						2.8 (.110")		2.80	
01189-02808	6.78	41							
01189-02810	8.36	33							
01189-02812	9.96	28							
01189-02814	11.53	24							
01189-02816	13.13	21							
01189-02818	14.71	19							
01189-02820	16.31	17							
01189-02822	17.88	16							

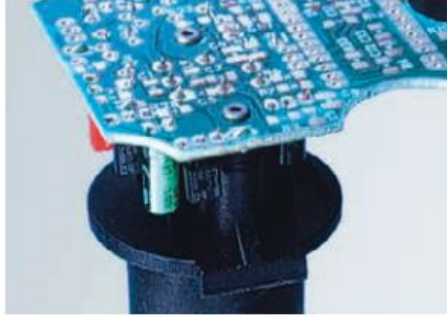
Assembly Applications

- DIN and other connectors
- Heatsinks
- Card ejectors
- Brackets and stiffener bars

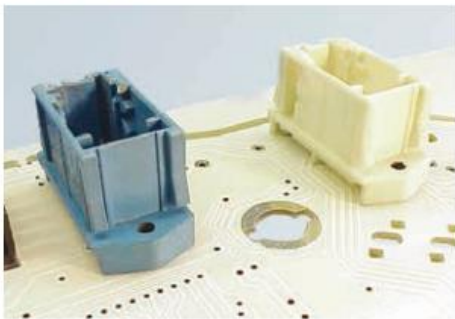
Surface mounted connectors to PCBs



Electronic component attachment



Automotive vertical mounted connectors



Traffic light reflector and contact point



DIN 41612 male edge connector

